
www.trust.com

USER MANUAL



Item 71110 Version 1.0
Visit www.trust.com
for the latest instructions

OCTOPUS CONTROL STATION

DE Das Handbuch in Deutsch finden Sie unter trust.com/71110

FR Le mode d'emploi français est disponible sur trust.com/71110

NL De Nederlandstalige handleiding is beschikbaar op trust.com/71110

IT Il manuale in italiano è disponibile alla pagina trust.com/71110

ES El manual en español se encuentra en trust.com/71110

PT O manual em português está disponível em trust.com/71110

NO Den norske brukerveiledningen er tilgjengelig via: www.trust.com/71110

SV Den svenska manualen finns på trust.com/71110

FI Suomenkielinen käyttöopas on saatavissa osoitteessa trust.com/71110

DA Den danske manual er tilgængelig på trust.com/71110

PL Instrukcja w języku polskim dostępna jest pod adresem trust.com/71110

CS Příručka v češtině je k dispozici na webu trust.com/71110

- SK** Slovenský návod je k dispozícii na trust.com/71110
- HU** A magyar nyelvű kézikönyv a trust.com/71110 weboldalon található
- RO** Manualul în limba Română este disponibil la adresa trust.com/71110
- BG** Ръководство на български език е на разположение на trust.com/71110
- EL** Το ελληνικό εγχειρίδιο είναι διαθέσιμο στη διεύθυνση trust.com/71110
- TR** Türkçe el kitabını trust.com/71110 adresinde bulabilirsiniz
- RU** Руководство по эксплуатации на русском языке доступно на сайте trust.com/71110
- SL** Priročnik v slovenščini je na voljo na spletni strani trust.com/71110
- HR** Priručnik na hrvatskom jeziku dostupan je na trust.com/71110
- UA** Українську версію посібника можна переглянути тут: trust.com/71110
- AR** يتوفر هذا الكتيب باللغة العربية على trust.com/71110

Read the manual carefully. Failure to follow these instructions can be dangerous. Incorrect installation will void any warranty on this product.

COMPATIBILITY

This product works with all Trust Smart Home transmitters and receivers.

FUNCTIONALITY

The ideal solution to wirelessly control and monitor your home for ultimate comfort and security

WIRELESS RADIO SIGNAL

- The 433.92 MHz radio signal passes through walls, windows and doors.
- Indoor 433.92 MHz range: up to 30 m. Outdoor 433.92 MHz range: up to 70 m (optimal conditions).
- The 868 MHz radio signal passes through walls, windows and doors.
- Indoor 868 MHz range: up to 70 m. Outdoor 868 MHz range: up to 120 m (optimal conditions).
- The Zigbee radio signal passes through walls, windows and doors.
- Indoor Zigbee range: up to 30 m. Outdoor Zigbee range: up to 70 m (optimal conditions).
- The range is dependent on local conditions, such as the presence of metals. For example, the thin metal coating in Low-emissivity (Low-E) glass can have a negative impact on the range of radio signals.
- There may be restrictions on the use of this device outside the EU. If applicable, check whether this device complies with local directives.
- This class 1 wireless device meets the essential requirements and other relevant conditions of R&TTE Directive 1999/5/EC. Be careful when using wireless devices if you have a pacemaker or are dependent on other life-saving, sensitive electronic equipment, because this device transmits radio signals.



For safety & liability information visit www.trust.com/safety

LIFE SUPPORT

Never use Trust Smarthome products for life support systems or other applications where failures can have life-threatening consequences.

REPAIRS

Do not try to repair this product yourself. The device contains no serviceable parts for the user.

WATER-RESISTANT

This product is not water-resistant.

CLEANING

Clean this product with a dry cloth. Do not use harsh chemicals, cleaning solvents or strong detergents.

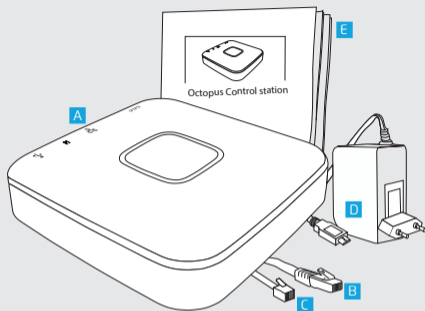
HANDLING

Do not drop the device, bump the device against something or shake it. Rough handling can damage internal circuit boards and fine mechanics.

ENVIRONMENT

The product should not be exposed to extreme heat or cold. This can damage the circuit boards and batteries or shorten its life.

1



1. Package content

First, please check if the package contains the following items:

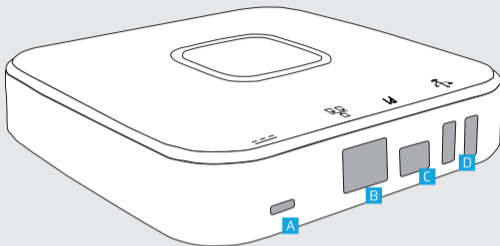
- A** Internet control station
- B** RJ-45 cable/Network cable
- C** P1 cable (Used for smart meters with a P1 connection. See trust.com/71110 for more info)
- D** Power adapter
- E** User manual



i This is a quick installation guide with basic installation and usage instructions. Check the advanced manual on www.trust.com/71110 for more in-depth information like:

- Adding & using timers, scenes and rules
- Connecting & Controlling other devices
- Technical specifications
- App settings
- and more

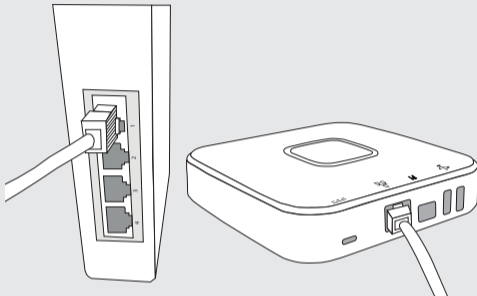
2



2. Connection ports

The control station has the following ports:

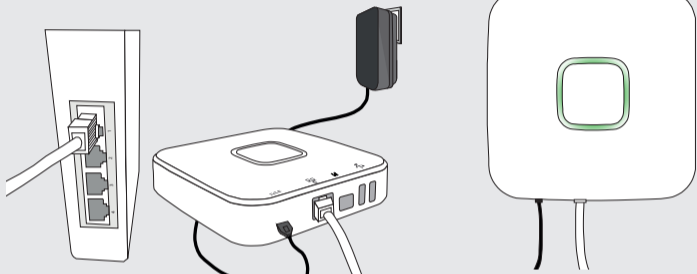
- A Micro USB Power port.** Used for connecting the control station to a wall socket
- B Network port.** Used for connecting to your home LAN network.
- C P1 port.** Used for smart energy meters with a P1 connection. See trust.com/71110 for more info
- D USB ports.** Used for future connectivity extensions. See trust.com/71110 for more info

3

3. Connect the control station to your modem/router

Connect the control station to the modem/router using the included RJ-45/network cable.

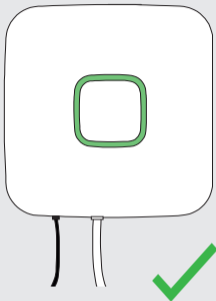
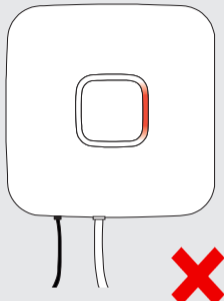
4



4. Connect the power adapter

Connect the micro usb power adapter to the Octopus control station and insert the plug of the power adapter into a wall socket. The LEDs of the control station will light up and start to spin to update the firmware.

⚠ Do not disconnect the power or interrupt the control station in any way when the LED ring is spinning green to update the firmware. When the control station is done booting and updating all four LEDs will stay green. This can take a few minutes.

5a**5b**

5. Check installation

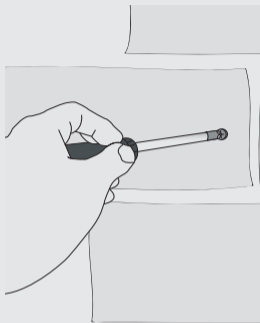
5a. If the installation of the control station is successful, all four LEDs (in the ring) will light up green and stay green. Check the advanced manual on how to disable the LED light.

5b. If after installation a red LED lights up try to take the following steps:

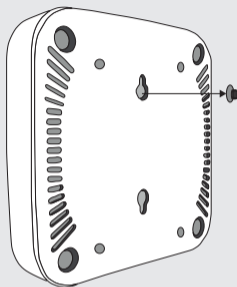
1. Check if network cable is connected to the modem/router and control station
2. Check if power adapter is connected to the wall socket and the control station
3. Press the network cable and power cable firmly into the control station and modem/router.
4. Connect the control station directly to your modem.
5. Disconnect and reconnect the power adapter.

For more troubleshooting go to trust.com/71110

6a



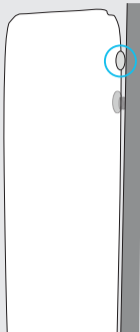
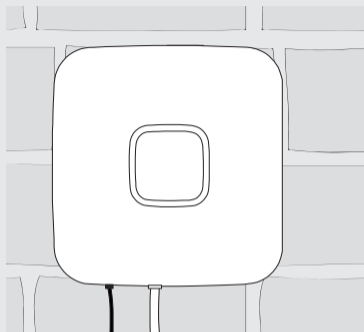
6b




6. Mounting (Optional)

6a. Secure the included screw in the surface where the control station will be mounted. Make sure the screw is not placed in a crack or a hole in the surface.

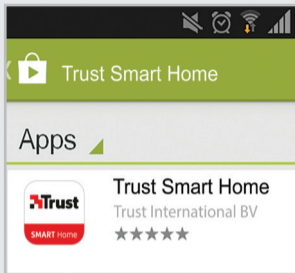
6b. Place the control station on the screw.

**6c**

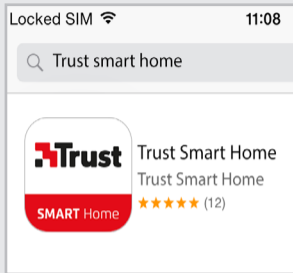
 Make sure the screw is fastened in a way that the rubber feet of the control station are firmly pressed against the surface when placed on the screw.

6c. For best performance mount the control station with the cables facing down.

8a



8b



8. Install the app

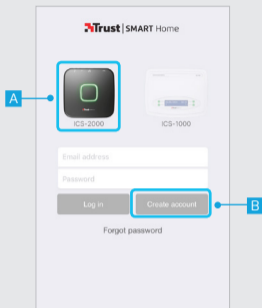
8a. Android

Open the Play Store, search for the Trust Smart Home app and install the app on your mobile device.

8b. iOS

Open the App store, search for the Trust Smart Home app and install the app on your mobile device.

9



9. Register account

⚠ Make sure your phone/tablet is connected to the same Home/LAN network as your ICS-2000.

When opening the App after installation the login screen will be shown.

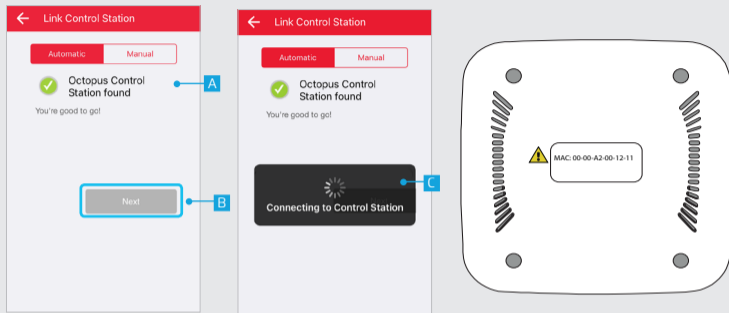
A First press on the picture of the ICS-2000 control station

B Press the CREATE ACCOUNT button.

C A screen appears to fill in your account information. Fill in your name, email address and a self created password.

D Choose if you want to receive a newsletter or not. (The newsletter contains information about updates for the control station)

E When all information is filled in press the NEXT button to continue the registration.



10. Link control station automatically

The App will scan for any control station connected to the network.

A When your control station is installed properly the App will show a message that the Octopus Control station is found.

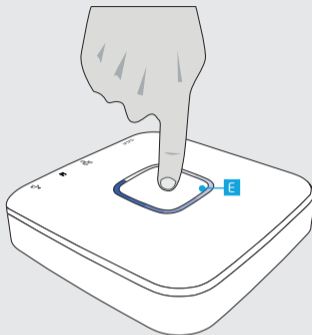
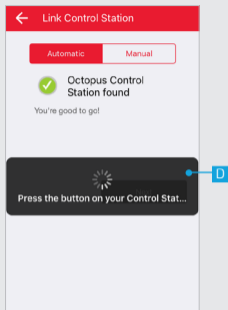
B Press NEXT to continue the linking process.

C The App is now connecting with your control station.

⚠️ "Manual linking required"

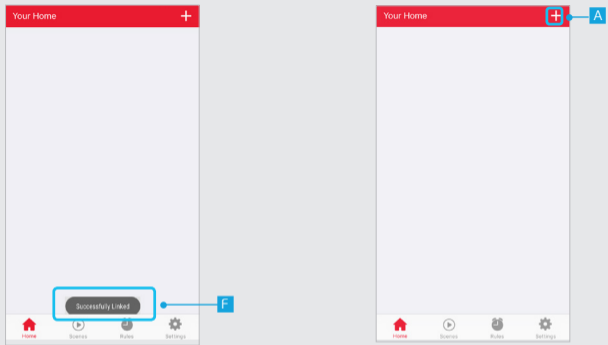
If you see above message, press the MANUAL button and fill in or select the correct MAC address. The MAC address can be found on the bottom of the control station. For more information on manual registration check the advanced manual on trust.com/71110

⚠️ If the App cannot connect to the control station go to trust.com/71110 for troubleshooting and support.



D After successful connection, a dialogue is shown to press the the blue circling button on your control station.

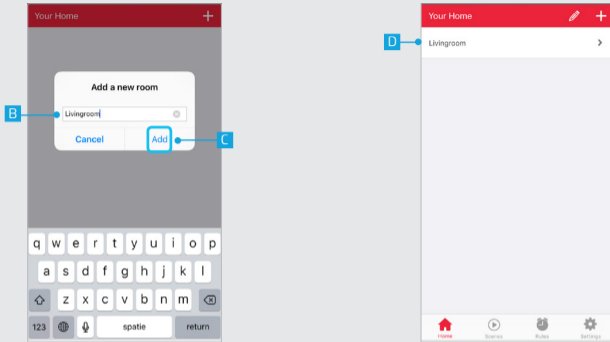
E Press the blue circling button on your control station within 60 seconds to link your control station to your account.



F When the registration process is completed the home screen of the App will be shown with the message "Successfully Linked".

11. Add a room

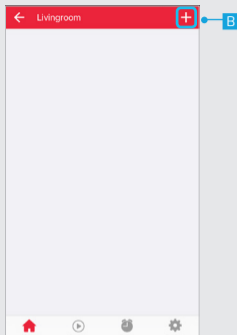
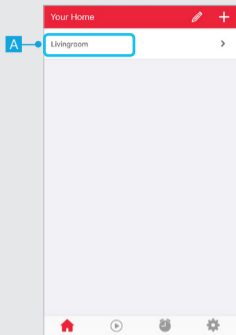
A Press the + button at the top of the screen to add a new room



B Enter the name of the room you want to add.

D The added room is now listed in your home

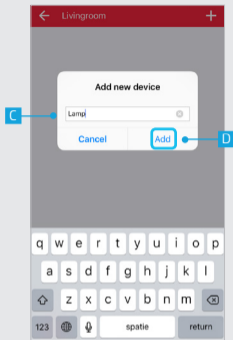
C Press ADD



12. Add a device

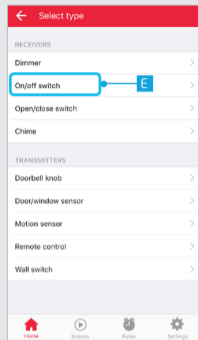
A Press on a room name to open it.

B Press the + button at the top of the screen to add a new device.

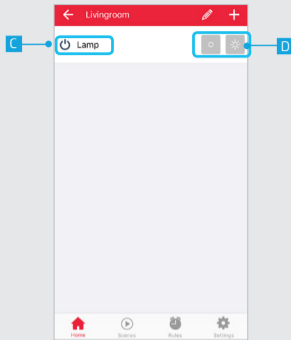
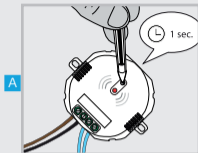


C Enter a name for the device you want to add

D Press ADD.



E Select the type of device you want to add to your room.



13. Connect a new device

⚠ If you already control your Trust Smart Home receiver with a remote control or wall switch continue to step 14. (Only for Startline products)

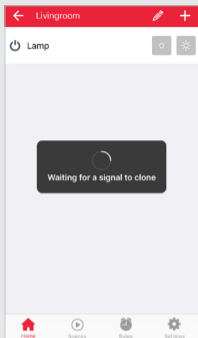
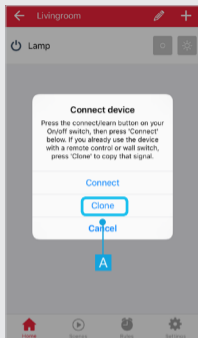
A Put your receiver in connect/learn mode. (Read the manual of the receiver on how to put it in connect/learn mode).

B When the receiver is in connect/learn mode press **CONNECT**.

The receiver will go on and off twice to acknowledge the connection.

C The device is now added to your room. You can now control the device with the App.

D Use the buttons to control the device.



14. Connect an existing device (clone)

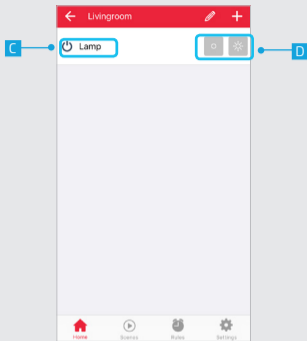
This step is recommended when you already control your Trust Smart Home receiver with a remote control or wall switch. (Only for Startline products)

A Press CLONE

B A dialogue is shown to clone the signal of the transmitter

C Give an ON signal on the transmitter that controls the device chosen in step 12e.

ICS-2000 OCTOPUS CONTROL STATION



C The device is added to your room. You can now control the device with the App.

D Use the buttons to control the device.



Check the advanced manual on www.trust.com/71110 for more in-depth information like:

- Adding & using timers, scenes and rules
- Connecting & Controlling other devices
- Technical specifications
- App settings
- and more



If possible, dispose of this product at a recycling center. Do not dispose of this product with the household waste. WEEE: Dispose of the device at a recycling centre. More information: www.trust.com

Warranty

This product is covered by the legal warranty that applies to your country and it begins on the day of purchase. For additional information, visit: www.trust.com/warranty/

Copyright

The contents of the "User manual" are subject to copyright protection. Without prior written permission, reproducing or copying is prohibited. Information in these documents is subject to change without prior notice. Check www.trust.com/71110 for updates.

 For support and FAQ go to trust.com/71110

**Declaration of conformity**

Trust International B.V. declares that the TRUST SMARTHOME-product:

model:	Octopus Control station
item number:	71110
intended use:	Indoor

is in compliance with the essential requirements and other relevant provisions of the following directives: EMC Directive (2004/108/EC), Low Voltage Directive (2006/95/EC), ROHS Directive (2011/65/EC), R&TTE Directive (1999/5/EC). The product is compatible with the following norms/standards:

The product is compatible with the following norms/standards:

EN.300.328
EN.300.220
EN 55022
EN 55024
ETSI-EN 301 489-17
NEN-EN-IEC 60950-1
EN 50581:2012

Manufacturer/Authorized representative,

H. Donker, Procurement Director

Dordrecht, 21 January 2016

TRUST INTERNATIONAL B.V.
LAAN VAN BARCELONA 600
3317DD DORDRECHT
NETHERLANDS
www.trust.com